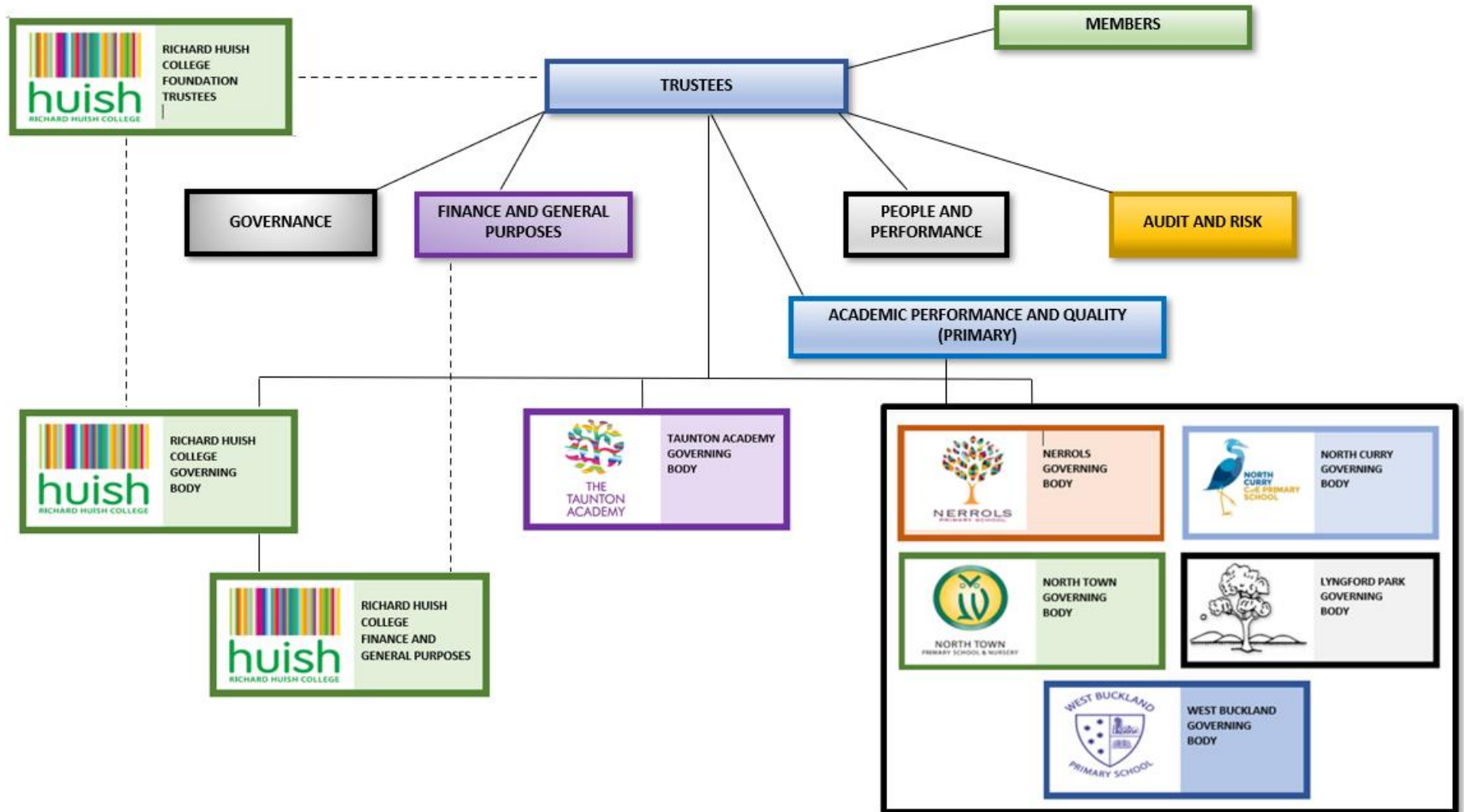


# RICHARD HUISH TRUST (RHT) GOVERNANCE STRUCTURE



## RICHARD HUISH TRUST (RHT) GOVERNANCE STRUCTURE

<b>Members:</b>	<b>Richard Huish College Foundation Trustees:</b>
<ul style="list-style-type: none"> <li>• Receive the RHT financial statements</li> <li>• Appoint the RHT auditors</li> <li>• Appoint and remove Directors</li> <li>• Oversee the culture, values and ethos</li> </ul>	<ul style="list-style-type: none"> <li>• Oversee Richard Huish legacy</li> <li>• Monitor performance of investment portfolio</li> <li>• Support students of RHC through charitable donations</li> <li>• RHC site landlords</li> </ul>
<b>Directors (Trustees):</b>	<b>Local Governing Bodies:</b>
<ul style="list-style-type: none"> <li>• RHT and institutional academic performance</li> <li>• RHT and institutional financial performance</li> <li>• RHT strategic planning</li> <li>• RHT risk management</li> <li>• RHT wide policies and procedures</li> </ul>	<ul style="list-style-type: none"> <li>• Oversight of academic and financial performance of each institution.</li> <li>• Institutional Strategic Planning</li> <li>• Institutional risk management</li> <li>• Institutional specific policies and procedures</li> </ul>
<b>Governance Committee:</b>	<b>Finance and General Purposes Committee:</b>
<ul style="list-style-type: none"> <li>• Recruitment and appointment of LGB Governors</li> <li>• Governor succession planning</li> <li>• Oversight and support of all aspects of Governance</li> <li>• Governor Skills Audits</li> <li>• Governor appraisals</li> </ul>	<ul style="list-style-type: none"> <li>• RHT and institutional financial management and oversight</li> <li>• Budget and forecast setting</li> <li>• Capital projects and funding</li> <li>• RHT contractual, lease and procurement activity</li> <li>• Provision of central services</li> </ul>
<b>People and Performance Committee:</b>	<b>Audit and Risk Committee:</b>
<ul style="list-style-type: none"> <li>• Oversight and monitoring of RHT People strategy</li> <li>• RHT People related policies and procedures</li> <li>• CPD</li> <li>• Senior leader performance management and remuneration</li> </ul>	<ul style="list-style-type: none"> <li>• RHT and institutional internal and external audit</li> <li>• RHT and institutional risk management, policies and procedures</li> <li>• Business continuity and disaster planning</li> </ul>
<b>Academic Performance and Quality Committee:</b>	<b>Richard Huish College Finance and General Purpose Committee:</b>
<ul style="list-style-type: none"> <li>• Institutional and RHT primary outcomes</li> <li>• Primary education quality</li> <li>• Monitoring Primary performance data</li> <li>• Sharing of good practice and peer support</li> <li>• Curriculum planning and offer</li> </ul>	<ul style="list-style-type: none"> <li>• RHC financial management and oversight</li> <li>• RHC Budget and forecast setting</li> <li>• RHC contractual, lease and procurement activity</li> </ul>